



POWERS

Equipment Company, Inc.

Refrigerated Equipment Manufacturers



BEVERAGE COOLERS

Contents

Three Generations of Quality Coolers

Powers Equipment Company is a family-owned and operated business that has been producing quality coolers in Bucks County, Pennsylvania since 1935. We are dedicated to crafting well-made, dependable commercial refrigerators in a reasonable timeframe and at a fair price — we've been doing just that for three generations.

We work hard to take advantage of technology and equipment upgrades to increase the performance of our coolers to help you store and sell your product.

Private-label production is a large part of our business. Chances are you've seen a Powers cooler recently — it might not say Powers on the outside, but it's a quality Powers product on the inside.

Powers Equipment Company coolers and refrigerators are built with such quality components as Tecumseh and Danfoss condensing units and Anthony glass doors. We use heavy gauge steel and aluminum and superior powder coat paint for added durability. Powers coolers are built in the United States and built to last.

Powers manufactures a full line of beverage coolers, floral coolers and refrigerators including storage coolers, countertop coolers and milk coolers.

At Powers, we're always glad to share ideas and help you get the cooler that best suits your needs. Just call and ask for Bruce Powers — let's see what we can build for you.



p. 2



p. 4



p. 6



p. 8



p. 10



p. 12



p. 14

Gliding Door Refrigerators	2
Gliding Full Length Door Refrigerators	4
Swinging Door Refrigerators	6
Swinging Full Length Door Refrigerators	8
Countertop Showcase Refrigerators	10
Milk Coolers	12
Storage Refrigerators	14
Warranty	16



POWERS
Equipment Company, Inc.

Refrigerated Equipment Manufacturers

105 Steamboat Drive, Warminster, PA 18974

Phone: **800-673-7868** Fax: 215-675-0878

www.powersequipment.com



BS103GD

DESCRIPTION	BS52GD	BS72GD	BS79GD	BS103GD	BS103GDHD*
Width	52"	72"	79 1/2"	103"	103"
Depth	31"	31"	31"	31"	31"
Height	74 1/2"	74 1/2"	74 1/2"	75 1/2"	75 1/2"
Volume/cu. ft.	41	54	59	79	79
Doors	2	2	3	4	4
Door Size	23" x 55"	32" x 55"	23" x 55"	23" x 55"	23" x 55"
Shelves	8	8	12	16	16
Unit HP req'd	1/2	1/2	1/2	1/2+	3/4
Voltage	115	115	115	115	230/115
Amps	10.5	10.5	10.5	13	7/12
Lights	2	2	4	4	4
Shipping weight	560#	700#	780#	930#	950#
CAPACITY					
Quarts	596	844	894	1192	1192
1/2 Gallons	344	488	516	688	688
Gallons	148	214	222	296	296
6 pack cans	200	300	300	400	400
6 pack bottles	132	180	198	264	264

*Heavy duty model with larger compressor for quick cooling of warm beverages. Great for high volume locations.

Best Value

All four body sizes offer maximum visual selling at a reasonable cost. These efficient, high-capacity refrigeration systems provide fast cooling in hot weather. Our heavy duty model has a larger compressor for quick cooling of warm beverages, great for high volume locations.

- ▶ Self contained — ready to plug in.
- ▶ Powder-coat exterior finish.
- ▶ Black anodized aluminum double pane glass self-closing doors.
- ▶ Heated PVC door jambs and tracks.
- ▶ Hot gas condensate evaporator.
- ▶ Switch-controlled vertical fluorescent lamps.
- ▶ Adjustable coated wire shelving.
- ▶ Balanced refrigeration systems.
- ▶ Louvered motor covers.
- ▶ Stainless steel bottom pans.
- ▶ Can be customized to suit individual needs.
- ▶ Environmentally friendly refrigerants.



BS52GD



BS79GD



BS72GD



BT103LGD

REMOTE	BR54LGD	BR72LGD	BR79LGD	BR103LGD
Width	54"	72"	79½"	103"
Depth	31"	31"	31"	31"
Height	74½"	74½"	74½"	74½"
Volume/cu. ft.	49	66	72	97
Doors	2	2	3	4
Door size	23" x 67"	32" x 67"	23" x 67"	23" x 67"
Shelves	10	10	15	20
Unit HP req'd	½	½	½ +	¾
Voltage	115	115	115	115
Amps	3	4	5	5
Lights	3	3	4	5
Shipping weight	560#	700#	800#	1000#
TOP MOUNTED	BT54LGD	BT72LGD	BT79LGD	BT103LGD
Ht. to top of compressor	86½"	86½"	86½"	88½"
Voltage top mounted	115	115	115	230/115
Amps top mounted	9	11	17	7/12
CAPACITY				
Quarts	724	1020	1086	1448
½ Gallons	416	584	624	832
Gallons	180	258	270	360
6 pack cans	248	372	372	496
6 pack bottles	156	216	234	312

Ideal for Narrow Aisles

Full length doors provide 20% more display space without increasing the cooler's dimensions. Four body sizes with two sizes of full length sliding doors offer inexpensive top to bottom display. Condensing units can be remotely placed in a basement, back room, or outside to eliminate noise and heat from the store. The cooler can be supplied with a remote condensing unit, or it can be purchased locally.

- ▶ Condensing units supplied with quick connects and an attractive cover.
- ▶ Automatic condensate evaporator standard on top-mounted model.
- ▶ All remotes equipped with expansion valves — specify refrigerant type when ordering.
- ▶ Black anodized aluminum double pane glass self-closing doors.
- ▶ Heated door jambs and tracks.
- ▶ Rigid all-welded exterior.
- ▶ Switch-controlled vertical fluorescent lamps.
- ▶ Adjustable coated wire shelving.
- ▶ Stainless steel bottom pans.
- ▶ Environmentally friendly refrigerants.



BT54LGD



BS79SD

Six different body sizes with swinging tempered glass doors are ideal for your busiest locations. Doors can be hinged either way and can be changed on location. Tighter door seals make these coolers more energy efficient than sliding door models. Doors can be locked in the open position for easy loading.

- ▶ Self contained — ready to plug in.
- ▶ Rigid all welded exterior with powder-coat finish.
- ▶ Black anodized aluminum self-closing swinging doors with heated door frames and jambs.
- ▶ Double pane tempered insulated glass.
- ▶ Switch-controlled fluorescent lamps.
- ▶ Adjustable heavy duty white epoxy wire shelves with front product stop.
- ▶ Balanced refrigeration systems.
- ▶ Louvered motor covers.
- ▶ Stainless steel bottom pan.
- ▶ Can be customized to suit individual requirements — see price sheet.
- ▶ Environmentally friendly refrigerants.
- ▶ Our heavy duty model has a larger compressor for quick cooling of warm beverages, great for high volume locations.

Six Sizes Fit Any Location



BS33SD

(Shown with optional electronic control)



BS52SD

DESCRIPTION	BS28SDFS	BS33SD	BS52SD	BS72SD	BS79SD	BS103SD	BS103SDHD*
Width	28 ¼"	33"	52"	72"	79 ½"	103"	103"
Depth	32"	29"	31"	31"	31"	31"	31"
Height	78"	74 ½"	74½"	74½"	74½"	75½"	75½"
Volume/cu. ft.	24 ½"	24	40	54	64	82	82
Doors	1	1	2	2	3	4	4
Door Size	26" x 60"	29" x 60"	23" x 54"	31" x 54"	23" x 54"	23" x 54"	23" x 54"
Shelves	4	4	8	8	12	16	16
Unit HP req'd	⅓	⅓	⅓	½	½	½+	¾
Voltage	115	115	115	115	115	115	230/115
Amps	8	8	11.5	11.5	12	15	7/12
Lights	1	1	3	2	4	5	5
Shipping Weight	320#	360#	560#	700#	780#	930#	950#
CAPACITY							
Quarts	480	582	596	844	896	1192	1192
½ Gallons	175	205	344	488	516	688	688
Gallons	75	80	148	214	222	296	296
6 pack cans	100	135	200	300	300	400	400
6 pack bottles	66	90	132	180	198	264	264

*Heavy duty model with larger compressor for quick cooling of warm beverages.



BT79SD

REMOTE	BR54SD	BR72SD	BR79SD	BR103SD	BR127SD	BR138SD	BR172SD
Width	54"	72"	79½"	103"	126¾"	138½"	172½"
Depth	31"	31"	31"	31"	31"	31"	31"
Height	74½"	74½"	74½"	74½"	74½"	74½"	74½"
Volume/cu. ft.	51	70	77	103	128	140	175
Doors	2	2	3	4	5	4	5
Door Size	23" x 66"	31" x 66"	23" x 66"	23" x 66"	23" x 66"	31" x 66"	31" x 66"
Shelves	10	10	15	20	25	20	25
Unit HP req'd	½	½	½+	¾	1	1	1½
Voltage	115	115	115	115	115	115	115
Amps	4	5	5	6	8	10	12
Lights	3	3	4	5	6	6	6
Shipping weight	560#	700#	800#	1000#	1450#	1600#	1800#
TOP MOUNTED	BT54SD	BT72SD	BT79SD	BT103SD	BT127SD	BT138SD	BT172SD
Height w/compressor	86½"	86½"	86½"	88½"	88½"	88½"	88½"
Voltage-top mounted	115	115	115	230/115	230/115	230/115	230/115
Amps top mounted	10	12	17	8/13	8/13	8/13	10/15
CAPACITY							
Quarts	724	1020	1108	1448	1832	2040	2550
½ Gallons	416	589	632	832	1048	1178	1472
Gallons	180	252	276	360	456	504	630
6 pack cans	248	372	372	496	620	744	930
6 pack bottles	156	234	216	312	372	468	585

Maximum Display

Seven different body sizes with two sizes of full length hinged reversible doors offer maximum top to bottom display. Condensing unit can be top-mounted or remote. Remote units can be placed in a basement, back room, or outside to eliminate noise and heat from the store. The cooler can be supplied with its own remote condensing unit, or it can be purchased locally.

- ▶ Top-mounted condensing unit supplied with quick connects and an attractive cover.
- ▶ Automatic condensate evaporator standard on top mounted model.
- ▶ All remotes equipped with expansion valves — specify refrigerant type when ordering.
- ▶ Rigid all welded exterior with powder coat finish.
- ▶ Black anodized aluminum, self-closing, swinging doors with heated frames and jambs.
- ▶ Double pane tempered insulated glass.
- ▶ Switch-controlled fluorescent lamps.
- ▶ Adjustable heavy duty white epoxy wire shelves with front product stop.
- ▶ Stainless steel bottom pans.
- ▶ Environmentally friendly refrigerants.



BT72SD



SS72

REMOTE	SR54	SR72	SR103	SR138
Width*	54"	72"	103"	138"
Depth*	29"	29"	29"	29"
Height**	44"	44"	44"	44"
Volume, cu. ft.	22	30	44	58
Shelves	4	4	8	8
Lights	1	1	2	2
Glass size	32" x 47"	32" x 65"	2-32" x 47"	2-32" x 65"
Doors	2	2	4	4
Door Size	24" x 31"	32" x 31"	24" x 31"	32" x 31"
Unit HP req'd	1/3	1/3	1/2	1/2
Ship wt.	300#	500#	700#	1100#
SELF CONTAINED	SS72	SS90	SS121	SS156
Width*	72"	90"	121"	156"
Depth*	29"	29"	29"	29"
Height**	44"	44"	44"	44"
Volume, cu. ft.	22	30	44	58
Shelves	4	4	8	8
Lights	1	1	2	2
Glass size	32" x 47"	32" x 65"	2-32" x 47"	2 - 32" x 65"
Doors	2	2	4	4
Door Size	24" x 31"	32" x 31"	24" x 31"	32" x 31"
Unit HP req'd	1/3	1/2	1/2	1/2 +
Ship wt.	500#	700#	900#	1300#

*Countertop adds 2" total to width and depth measurements

**Height measurement includes 4" legs or base plus countertop

Create Impulse Sales



This merchandiser can be used as a checkout counter to move refrigerated, high-profit, impulse sale items. Made with a rugged all steel welded exterior in your choice of exterior paint color or stainless steel. Customize your cooler's countertop with the surface material of your choice to match your decor for a more finished look.

- ▶ Powder-coat exterior finish.
- ▶ Self-contained or remote, with rigid all welded exterior.
- ▶ Black self-closing gliding doors.
- ▶ Heavy duty white epoxy wire shelves with front product stop.
- ▶ Switch-controlled fluorescent lamps.
- ▶ Louvered motor cover in self contained models.
- ▶ Stainless steel bottom pan.
- ▶ Double pane front glass.
- ▶ Two shelves in motor compartment in self-contained models.
- ▶ Countertop color must be specified when ordering cooler.

- ▶ Automatic condensate evaporator included in self-contained models.

Options

Doors: Normally furnished with glass front window and gliding glass doors in back. Can be a pass through with doors on both sides; can have glass ends. Can have a solid back — doors in front only.

Legs: Normally furnished with 4" legs; can be supplied without legs. A solid 4" base can be substituted for an additional charge.

Remote: When ordering a remote cooler, please indicate on which side of the cooler the refrigeration and drain lines should terminate.



780

DESCRIPTION	681	569	780
Width	33"	47"	59"
Depth	31"	31"	31"
Height	40½"	40½"	40½"
Volume/cu. ft.	11.2	16.7	21.4
Unit HP req'd	1/5	1/5	1/5
Voltage	115	115	115
Amps	4	4	4
Bottom Racks	2	3	4
Interior width	28¾"	42¾"	54¾"
Interior depth	27"	27"	27"
Interior height	25"	25"	25"
Shipping weight	220#	270#	320#
CAPACITY			
13 x 13 case 16 qt. capacity	8	12	16
13 x 16 case 20 qt. capacity	4	8	12
13 x 19 case 24 qt. capacity	4	8	10

Dependable and durable

Serve milk directly from the case on a cafeteria line, or use as back room storage in high volume locations. Unique lid arrangement offers lowest serving height in the industry — only 16" from floor to bottom of opening when lower lid is open. Long-lasting aluminum interior is standard in a Powers, for most efficient cold wall cooling. Lids can be locked with long shank padlock between upper and lower handle.

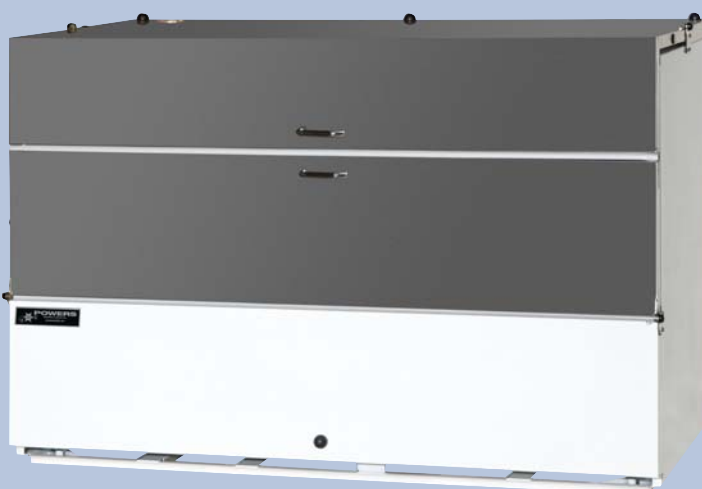
- ▶ NSF and ETL approved.
- ▶ Energy efficient and quiet — no interior fan.
- ▶ Low maintenance.
- ▶ 2" non-CFC foamed-in-place polyurethane insulated cabinet and lids.
- ▶ All copper tubing.
- ▶ Stainless steel top, lids, hinges and latches; heavy gauge, aluminum interior.
- ▶ Vinyl gasket is removable without tools for easy maintenance.
- ▶ Removable easy-to-clean plastic bottom pans.
- ▶ 2" dial thermometer.
- ▶ Powder-coat or stainless steel exterior finish.
- ▶ Bottom drain.
- ▶ 1/5 HP condensing unit, CFC-free R134A refrigerant.
- ▶ Optional lock.
- ▶ 8' power cord, 115V 60HZ.



569 closed



569 open



780



681 open



681 closed



BT70 open

DESCRIPTION	BT70	BT103
Width	70"	103"
Depth	30"	31 "
Height	74½" (88" top of unit)	74½" (88" top of unit)
Volume/cu. ft.	74	108
Unit HP	⅓	½+
Voltage	115	115
Amps	7	11
Shipping weight	750#	1100#
Capacity		
Milk cases (13 x 13)	50-16 qt.	70-16 qt.
Milk cases (13 x 16)	40-20 qt.	60-20 qt.
Milk cases (13 x 19)	30-24 qt.	50-24 qt.

Accessible Storage

Store beverages where you need them. Inexpensive storage for high volume locations. Rugged foamed-in-place construction with a stainless steel door and floor, galvanized interior, and self-contained refrigeration system.

- ▶ BT70 has 2" foamed-in-place polyurethane insulation.
- ▶ All welded exterior, galvanized interior.
- ▶ Stainless steel bottom.
- ▶ Foamed-in-place stainless steel door with magnetic gasket and inside door release latch.
- ▶ Supplied with optional crankcase heater and fan cycling control on condensing unit for outdoor operation.
- ▶ Larger model can have two doors — load one side, unload the other.
- ▶ Environmentally friendly refrigerants.
- ▶ BT103 supplied with quick connects on condensing unit.



BT70 closed

Decoding our product numbers

Our catalog is set up by door types, condensing unit position or usage. The table below lists the number/letter usage.

The first letter indicates usage.	B	Stands for bottled goods.
	S	Stands for showcase.
The second letter indicates the condensing unit position.	S	Means standard bottom mount unit.
	R	Means remote-condensing unit; order with or without unit.
	T	Means top mounted unit.
The next numbers refer to cooler width.	54	Means 54".
The letters that follow the numbers indicate the type of doors.	GD	Means gliding or sliding doors.
	SD	Means swinging or hinged doors.
Any letters following those two letters would have something to do with a specialty.	HD	Means heavy duty.
	SS	Means stainless steel.
	F	Means foamed in place polyurethane insulation.

Order by phone or email for fast service

Call us at **800-673-7868**,
email sales@powersequipment.com
or fax us at **215-675-0878**.

We will acknowledge your order in writing immediately and ship promptly. We will call back if we have questions and acknowledge by return mail or fax. We use all the major trucking companies in the U.S., and are located near Philadelphia, PA, a major transportation center. If you have a trucking company that you favor, tell us when you order, and we'll try to use them.

Terms

Prices are F.O.B. Warminster, PA. Net 30 terms to firms with satisfactory credit. Otherwise, check in advance or deposit with order, and balance due before shipping. Prices and product specifications are subject to change without notice.

Warranty

Standard One-Year Warranty

Powers Equipment Company warrants to the original purchaser of every Powers refrigerated unit, that all parts used in the construction or fabrication of that unit will be free from defects in material and workmanship, under normal use and service, for a period of one year from the date of installation. Our obligation under this warranty is limited to repairing or replacing, FOB the factory, any part that we find to be defective upon inspection, within the time period covered by this warranty.

Standard Five-Year Compressor Warranty

In addition to the standard one year parts warranty, Powers warrants to the original purchaser for a period of five years from the date of installation, that we will replace the hermetically sealed compressor on the unit if found, in the reasonable opinion of the factory, to be defective in material or workmanship. Relays, overloads, capacitors, and any other electrical components are not included in the five-year warranty. It is the owner's responsibility to return the serial plate of the failed compressor, or the compressor itself, at the option of the factory. Failure to do so will void the warranty. Replacement of a defective compressor is limited to one (1) compressor by Powers during the five-year (5) period.

This warranty does not give the original purchaser of the refrigerated unit the right to purchase a complete replacement condensing unit of the same make or another make. It further does not permit the replacement to be made with a compressor of another make unless authorized by Powers. In the event that Powers authorizes the original purchaser to purchase a replacement compressor locally, only the wholesale cost of the compressor is refundable.

Standard One Year Labor Warranty

Powers provides a one year service labor warranty on warranted repairs, subject to the following terms and conditions:

- ▶ The warranty is in effect for one year from the date of installation.
- ▶ Factory service authorization must be obtained before any work may be performed under the labor warranty. Call Powers directly for this authorization. No claim will be honored without authorization from Powers.
- ▶ The warranty covers reasonable labor costs, based on straight time, when the unit has been diagnosed as defective.
- ▶ This warranty does not cover original installation, initial start-up, normal adjustments, or maintenance.
- ▶ Travel time for service personnel will be covered under this warranty within a reasonable radius of the installation site.
- ▶ OEM parts needed for warranty repairs can be obtained from Powers Equipment.

Key Points

Defective conditions caused by abnormal use or misuse, lack of or improper maintenance, damage by third parties, alterations, acts of God, failure to follow installation, maintenance, or safety instructions, or any other event beyond the control of the Company will not be covered under this warranty. These warranties are in lieu of all other warranties, expressed or implied.

Powers assumes no obligation whatsoever for consequential or incidental damages, including but not limited to loss of product.



POWERS
Equipment Company, Inc.

Refrigerated Equipment Manufacturers
105 Steamboat Drive, Warminster, PA 18974
Phone: **800-673-7868** Fax: 215-675-0878
www.powersequipment.com

Put a Powers to Work Selling for You



Three Generations of Quality Coolers



POWERS
Equipment Company, Inc.

Refrigerated Equipment Manufacturers
105 Steamboat Drive, Warminster, PA 18974
Phone: **800-673-7868** Fax: 215-675-0878
www.powersequipment.com